



K O B E R T - I N

Kobert-In is a large format wall panel, created to decorate interior spaces, both commercial and residential.

Kobert-In consists of a composite panel with external layers of aluminium and a mineral core, lightweight, robust and easy to handle. y núcleo mineral, de poco peso, robusto y fácilmente manipulable. Its technical qualities provide great dimensional stability and a very high resistance to fire (Kobert-In FR) and humidity (Kobert-In FR and PE).

FR and PE: Kobert-In is available in two different holders:

Kobert-In FR:

- 100% water and fire resistant (Bs1d0)
- Dimensions: 2600x1220x4 mm (Sabbia) / 2600x1200x4 mm (Specchio y Ultra Matt)
- Model range: 25 designs

Kobert-In PE:

- 100% water resistant
- Dimensions: 2440x1220x4 mm (Sabbia) / 2440x1200x4 mm (Specchio y Ultra Matt)
- Modle range: 9 designs

Three collections different finish:

- **Specchio Collection**, con un espectacular acabado en alto brillo
- **Sabbia Collection**, con un atractivo acabado texturizado mate
- **Ultra Matt Collection**, con un elegante acabado ultramate antihuella

The installation of Kobert-In is easy, fast, without the need for specific tools and does not generate dust when cutting.





KOBERT-IN FR SPECCHIO

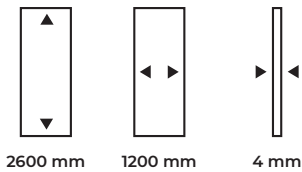
The Kober-In FR high-gloss finish range.

- ✓ FR (fire resistant Bs1d0)
- ✓ 100% water resistant
- ✓ 2600x1200x4 mm
- ✓ 20kg per plank
- ✓ High gloss

KOBERT-IN FR

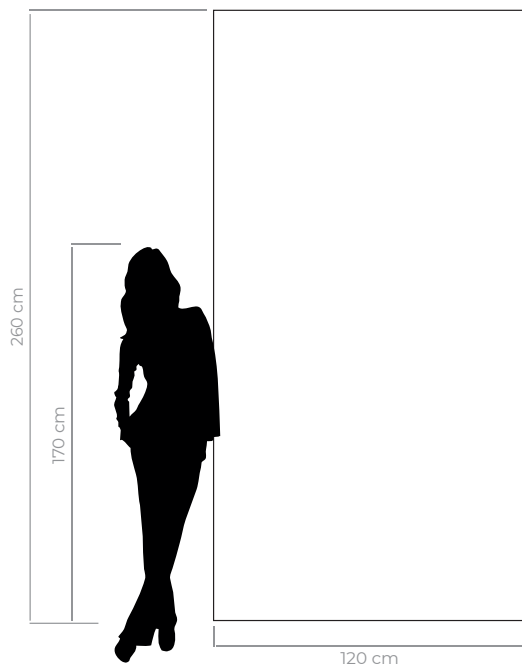
S P E C C H I O

KI30 Versilia



FICHA TÉCNICA

Escala real
Medidas: 2600x1200 mm



KI60

Chevron Nero

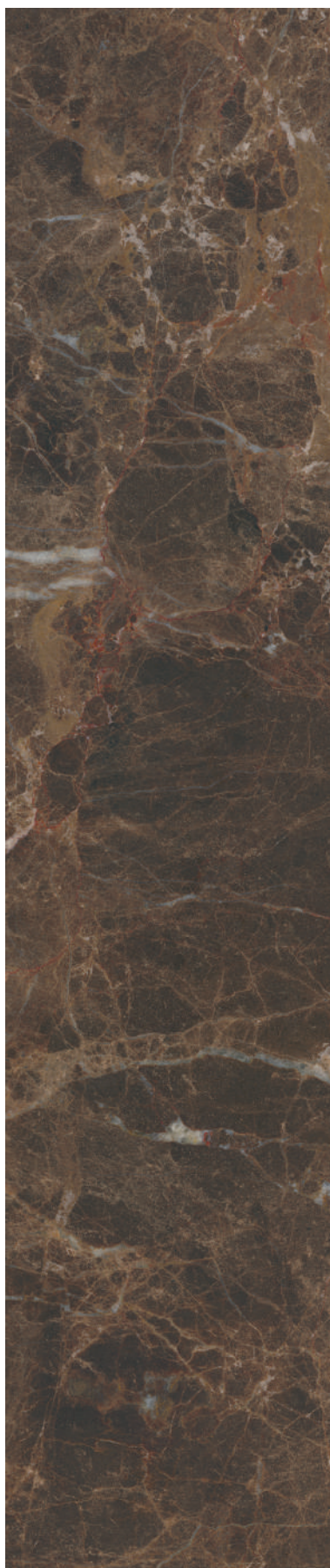
REF: KO60B04-2600X1200



KI03

Infinite

REF: KO03B04-2600X1200



KI27

Emperador

REF: KO27B04-2600X1200



KI29

Sabana

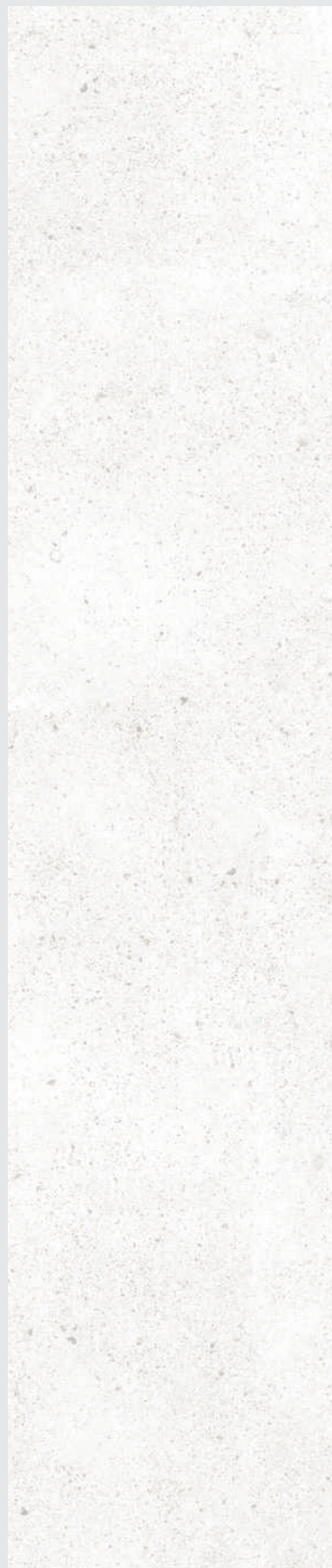
REF: KO29B04-2600X1200



KI01
Mud
REF: KO01B04-2600X1200



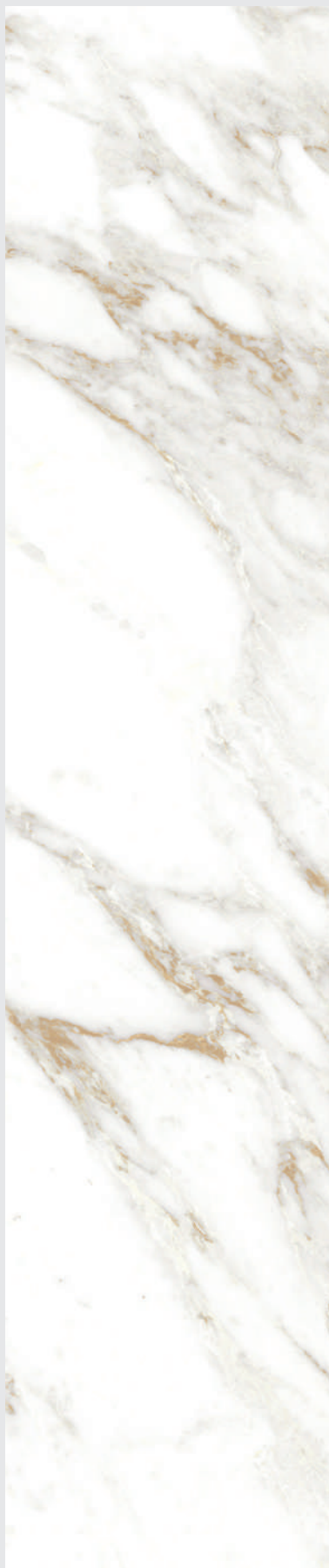
KI54
Calacata Gold
REF: KO54B04-2600X1200



KI35
Verona white
REF: KO35B04-2600X1200



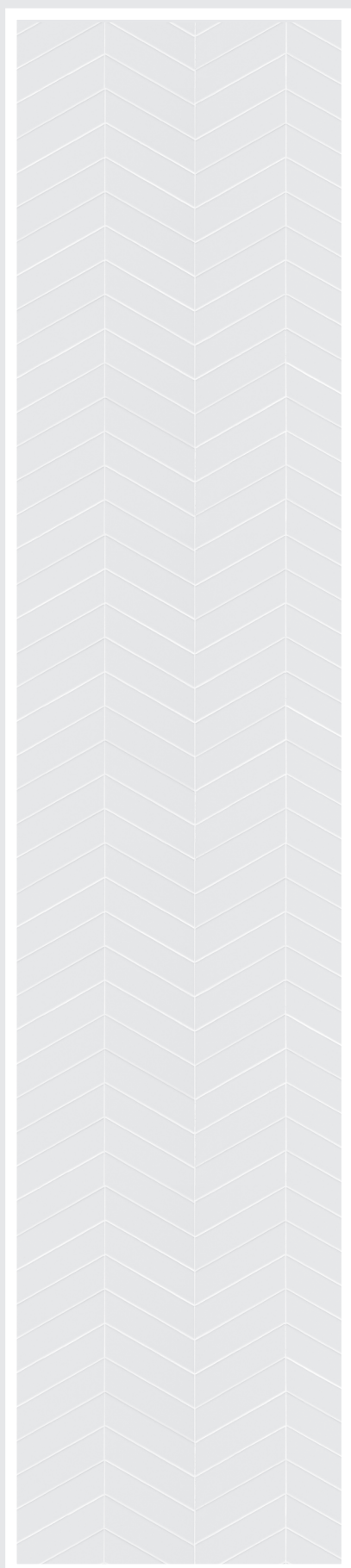
KI30
Versilia
REF: KO30B04-2600X1200



KI59
Sandstorm
REF: KO59B04-2600X1200



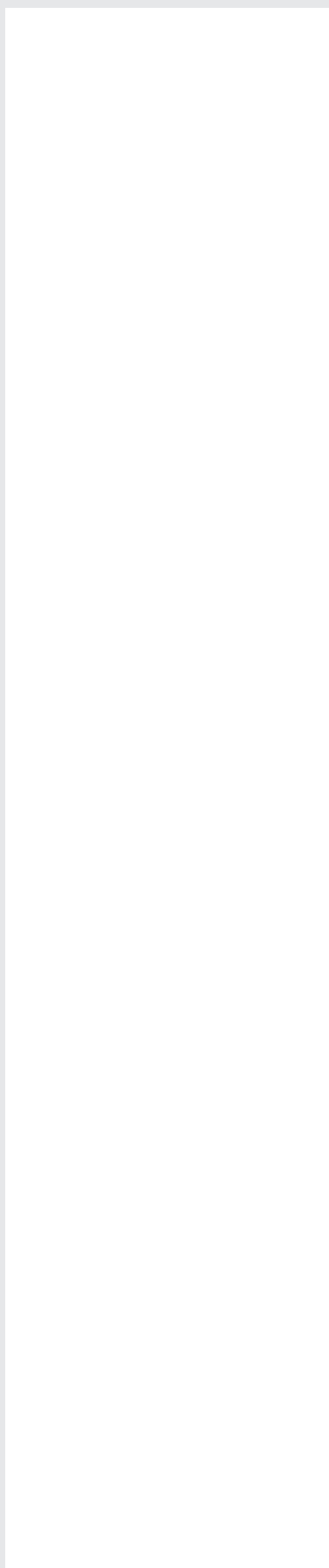
KI13
Grey Frise
REF: KO13B04-2600X1200



KI61

Chevron Bianco

REF: KO61B04-2600X1200



KI17

White Pearl

REF: KO17B04-2600X1200

SABANA BOOKMATCH A and SABANA BOOKMATCH B

Two new symmetrical designs that allow you to create an exclusive design with a mirror effect.

With these two models, a wide range of decoration options opens up.
Some examples of combinations: KI29A+KI29B, or KI29B+KI29A, or KI29A+KI29B+KI29A. It is also possible to combine Sabana Bookmatch with any of the 5 variants of our standard KI29 Sabana (page 189).







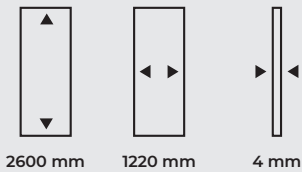
KOBERT-IN FR SABBIA

The Kobert-In FR textured matt finish range.

- ✓ FR (fire resistant Bsld0)
- ✓ 100% water resistant
- ✓ 2600x1220x4 mm
- ✓ 20kg per plank
- ✓ Textured matt finish

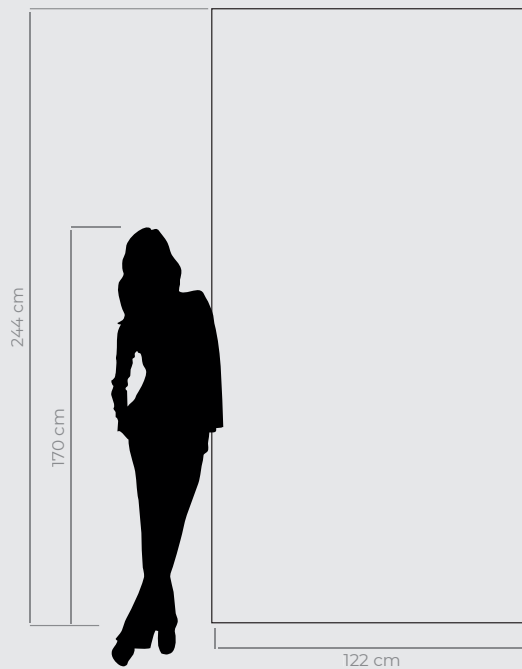
KOBERT-IN FR

S A B B I A



FICHA TÉCNICA

Escala real
Medidas: 2440x1220 mm

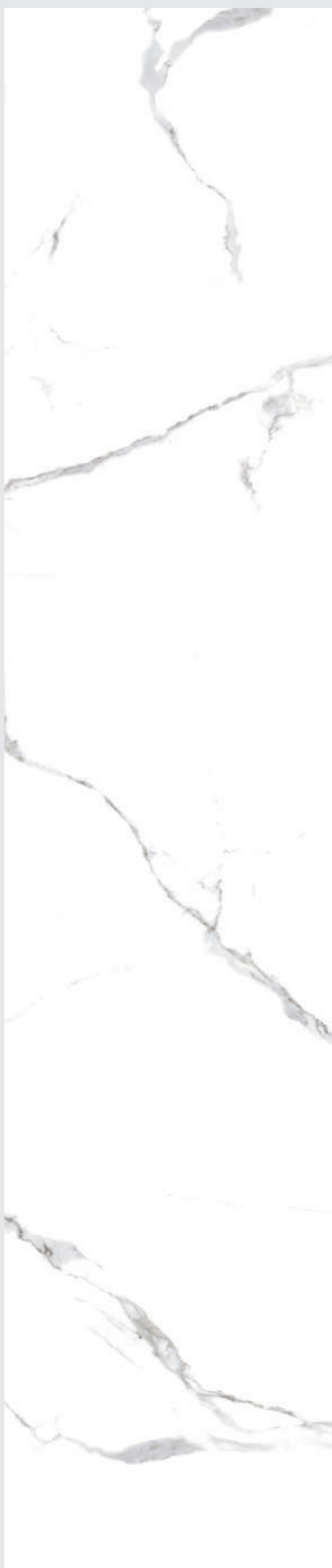


KI57

Everest

REF: KO57B04M-2600X1220





KI22
Calacata Matt
REF: RGKI22M04-2600X1220



KI37
Broken Black
REF: KO37B04M-2600X1220



KI11
Manson
REF: KO11B04M-2600X1220



KI34

Urban Concrete

REF: KO34B04M-2600X1220



KI09

Chronic

REF: KO09B04M-2600X1220



KI23

Concrete B

REF: RGKI23M04-2600X1220



KI21
Natural Oak
REF: RGKI21M04-2600X1220



KI21
Natural Oak





KI39 Silk White

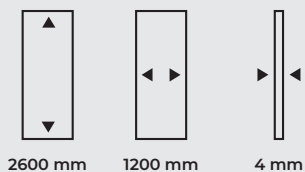
KOBERT-IN FR ULTRA MATT

The ultra-matt textured finish range of Kobert-In FR.

- ✓ FR (fire resistant Bs1d0)
- ✓ 100% water resistant
- ✓ 2600x1200x4 mm
- ✓ 20kg per plank

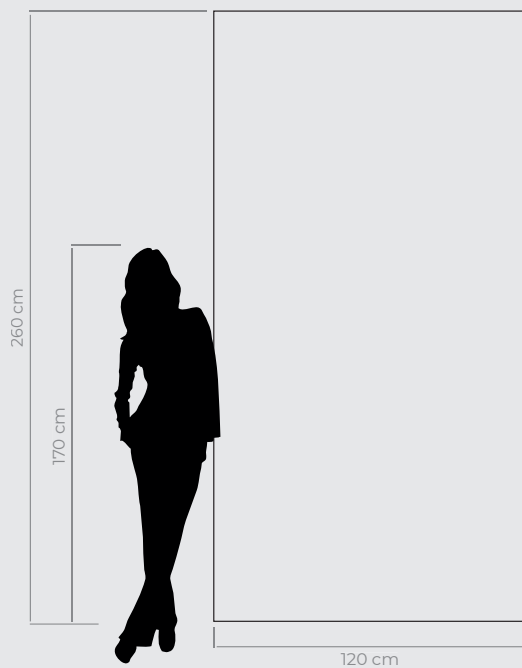
KOBERT-IN FR

ULTRA MATT



FICHA TÉCNICA

Escala real
Medidas: 2600x1200 mm



KI39

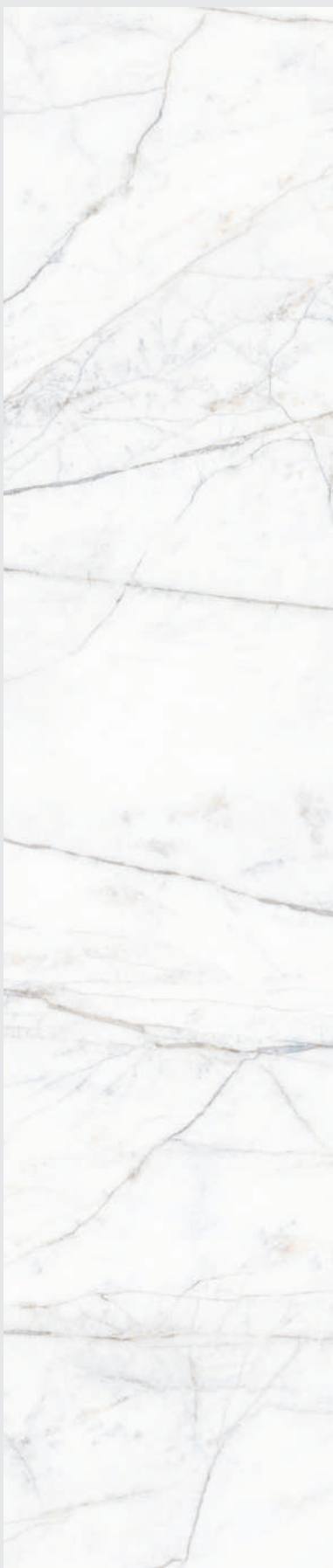
Silk White

REF: KO39B04U-2600X1200





K139 Silk White



KI58
Everest
REF: KO58B04U-2600X1200



KI46
Calacata Gold Ultramate
REF: KO46B04U-2600X1200





K158 Everest





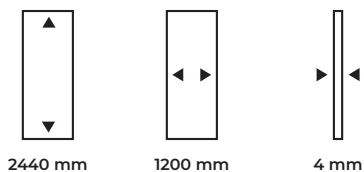
KOBERT-IN PE SPECCHIO

The Kobert-In PE high gloss finish range.

- ✓ 100% water resistant
- ✓ 2440x1200x4 mm
- ✓ 15kg per plank
- ✓ High gloss

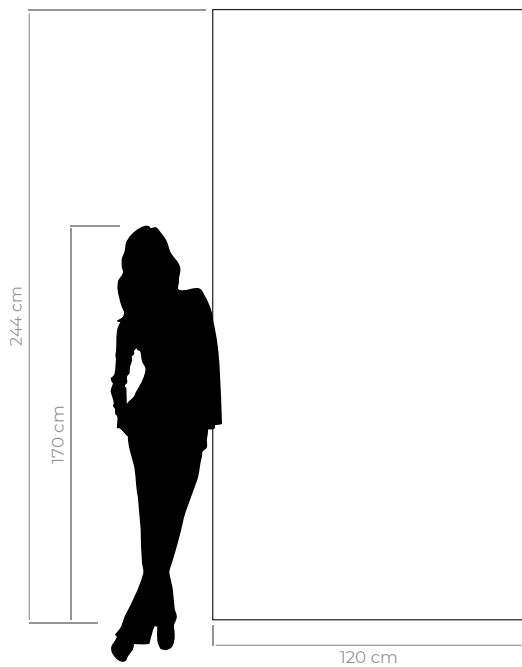
KOBERT-IN PE

S P E C C H I O



FICHA TÉCNICA

Escala real
Medidas: 2440x1200 mm



KI61

Chevron Bianco

REF: 1GKO6104M-2440X1200



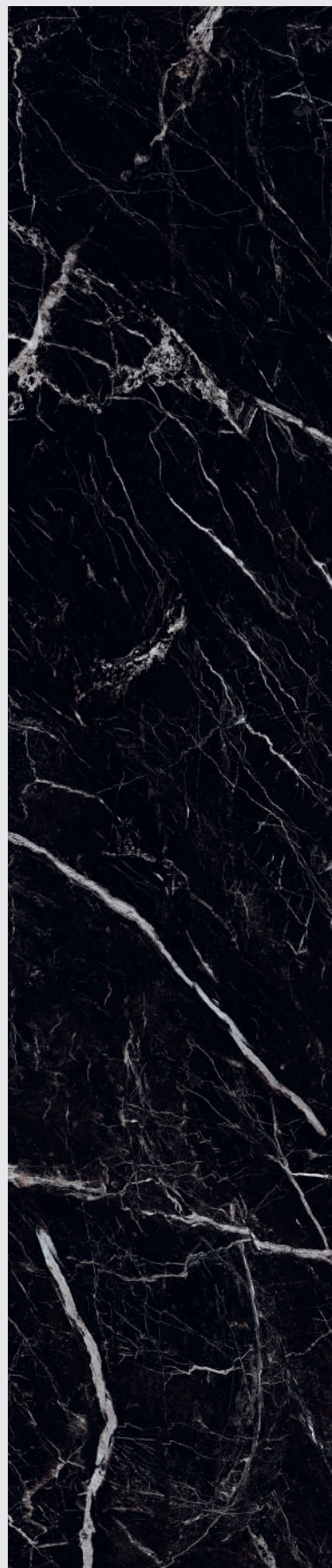
KI61 Chevron Bianco



KI01
Mud
REF: 1GKO0104M-2440X1200



KI54
Calacata Gold
REF: 1GKO5404M-2440X1200



KI03
Infinite
REF: 1GKO0304M-2440X1200



KI03
Infinite





KOBERT-IN PE SABBIA

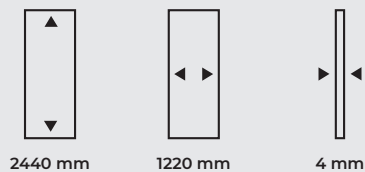
The textured matt finish range of Kobert-In PE.

- ✓ 100% water resistant
- ✓ 2440x1220x4 mm
- ✓ 15kg per plank
- ✓ Textured matt

KOBERT-IN PE

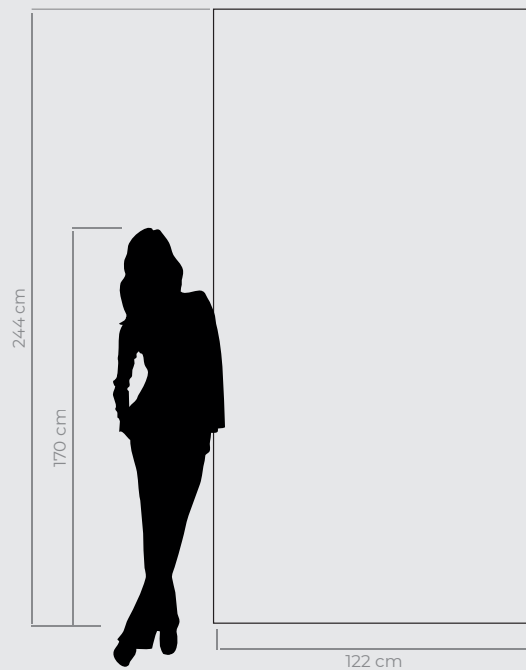
S A B B I A

KI09 Chronic



FICHA TÉCNICA

Escala real
Medidas: 2440x1220 mm

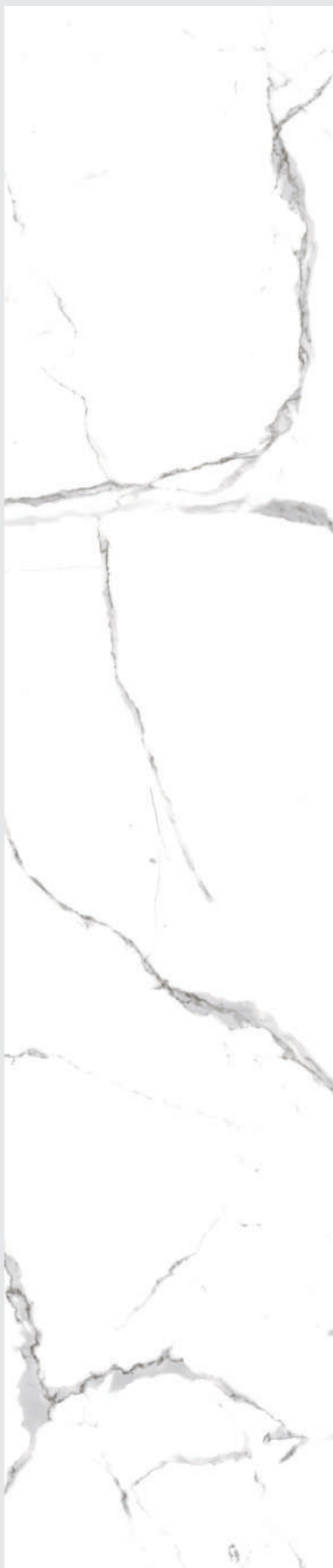


KI57

Everest

REF: 1GKO5704M-2440X1220





KI22
Calacata Matt
REF: 1GKO2204M-2440X1220



KI37
Broken Black
REF: 1GKO0304M-2440X1220



KI09
Chronic
REF: 1GKO0904M-2440X1220





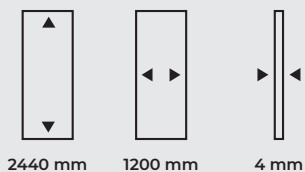
KOBERT-IN PE ULTRA MATT

The ultra-matt textured finish range of Kobert-In FR.

- ✓ 100% water resistant
- ✓ 2440x1200x4 mm
- ✓ 15kg per plank
- ✓ Ultra matt finish

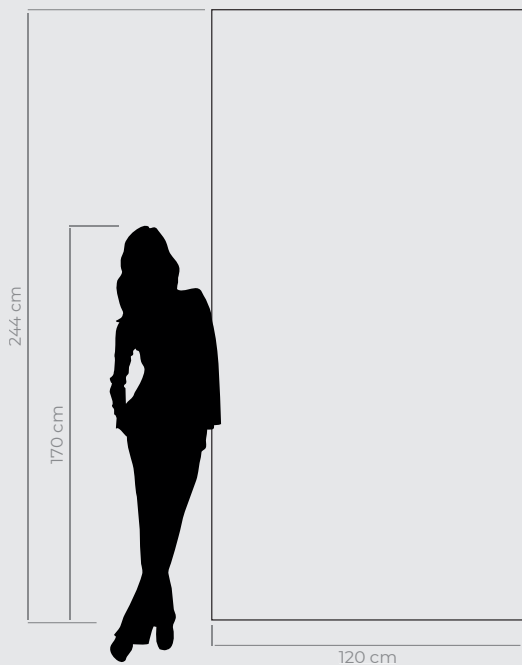
KOBERT-IN PE

ULTRA MATT



FICHA TÉCNICA

Escala real
Medidas: 2440x1200 mm



KI39

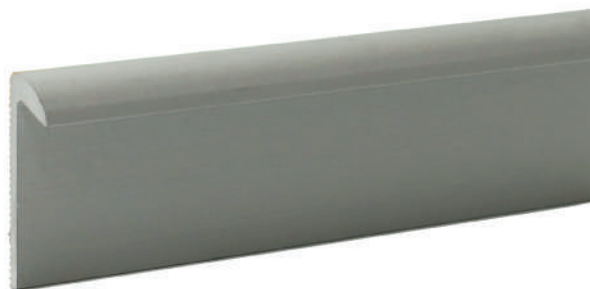
Silk White

REF: KO39B04U-2600X1200

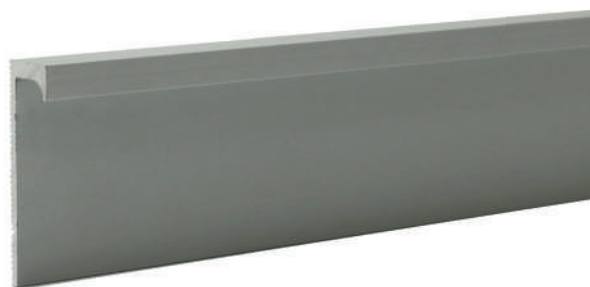
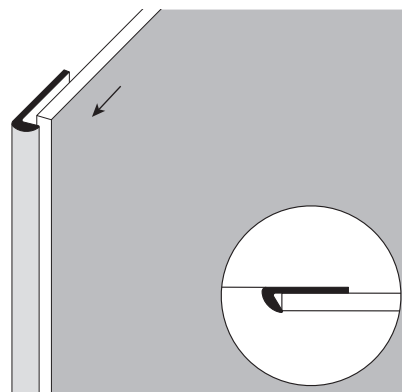




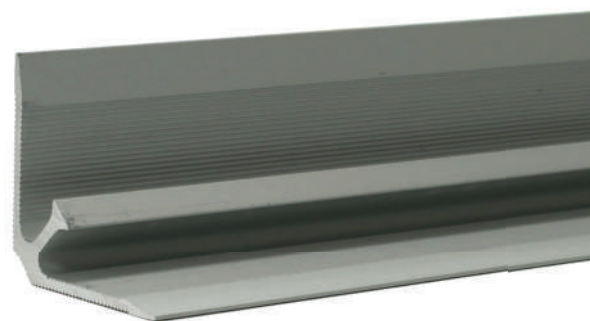
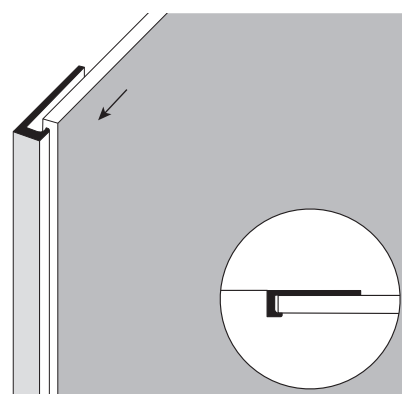
K139 Silk White



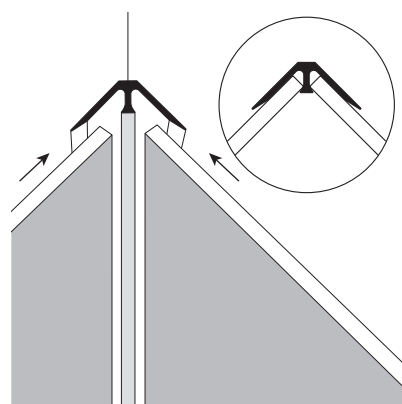
Round finish
Medidas: 2700x18x4 mm
REF: REINOX322-0



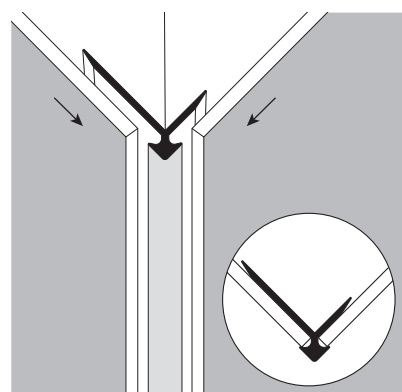
Square finish
Medidas: 2700x18x4 mm
REF: ESINOX344-0

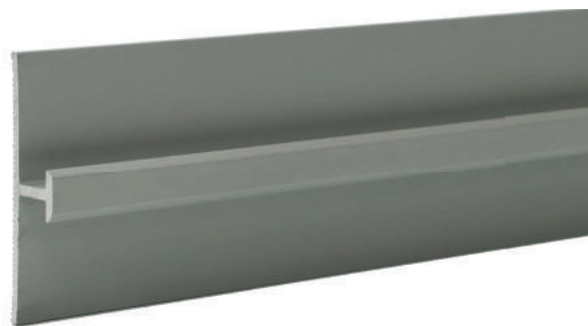


Inside corner
Medidas: 2700x18x4 mm
REF: ESINOX343-0

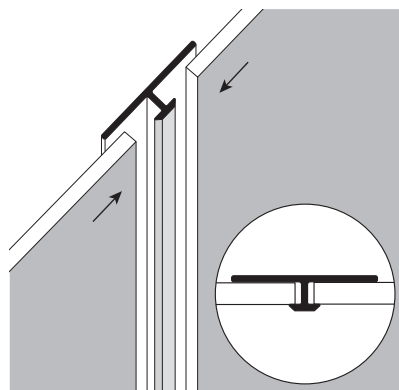


Edge profile
Medidas: 300x18x4 mm
REF: ESINOX342-0

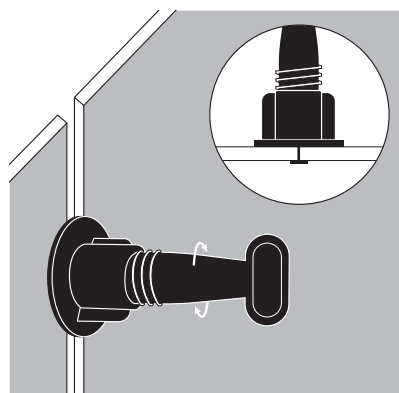




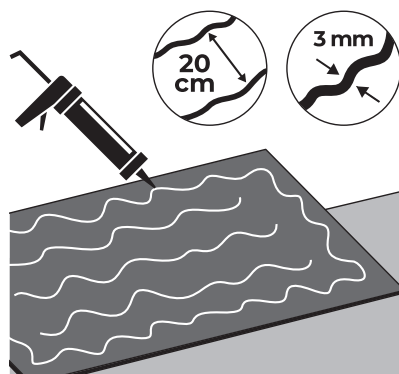
Seam joint
Medidas: 2700x300x45 mm
REF: ESINOX330A-0



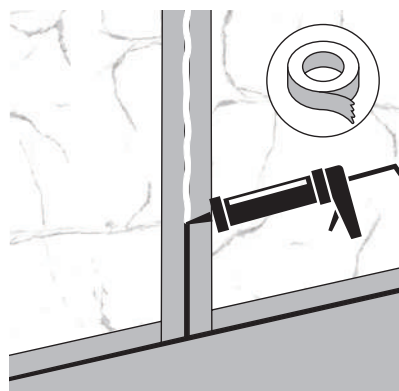
Sistema de nivelación (50uds reutilizables)
REF: SISNIREU



Mapeflex MS45 300ml (Adhesive)
REF: MAPEFLEX300G



Mapesil AC (Sealant)
REF: Consultar según diseño a elegir



Prior to Installation

Due to its large size, several aspects should be taken into account before installation.

1. Check the route to the location where the panels are intended to be placed, to ensure that two people will be able to handle the panel to the installation place.
2. Wall Impression cannot be installed outdoors. When in doubt, check with the manufacturer.
3. Review all the information on the technical sheet to know if the product meets the appropriate requirements of the place where you want to install.
4. Establish a wide and safe workspace to be able to manipulate the panels.
5. Wall Impression is designed for vertical installation as it is a non-rectified product.

Equipment & Materials to Install Kobert-In Panels

1. Table saw/Circular saw with cutting guide. Cutting guide must be long enough to cut the length of the panel. Circular saw blade should be suitable for cutting aluminum.
2. Quick Grab, Heavy Duty Construction Adhesive.
3. Sealant to fill in seams.
4. Wide masking tape to protect edges of panels from excess sealant.
5. Caulking gun to apply sealant material between panels.
6. Plastic spatula to clean excess sealant.
7. Electric drill is only necessary if you need to make holes for electrical outlets, light switches, etc. A quick cutting steel drill bit is recommended.
8. Sandpaper 120 grit.

Transportation & Handling

1. Upon opening the package/pallet, before you handle the panels, make sure they are in good condition.
2. Carry the Kobert-In panels as individual pieces using two people (Figure 1).
3. Avoid setting the panels on the floor by the corners, always try to set the panels down on the flat edge and support it with something soft like wood or rubber that will avoid scratches.
4. Wear protective gloves when handling the panels.
5. Transport the panels perpendicular to the ground.
6. Select an open and safe work area as close as possible to the installation location.
7. When cutting the panels be sure that the height of the cutting table is at a comfortable level for the installers to ensure precision cuts.

Recommendations

1. Check the flatness of the wall you are installing the panels on using a 5' level (Figure 2). The maximum allowable tolerance is 1/8 inch, anything more should be filled with some filler material that is fixed to the wall to even it out. Also check that the wall surface you are installing onto is dry and free of moisture. Clean all dust, grease or any other substance that may compromise the adhesion of the panel to the wall.

2. Be aware of the sequence of the panel designs. In most cases, the pattern you have selected comes in 5 different variations, these are always arranged in order of 1 to 5 during production, however they may not be in that order when they are packaged. All panels have a small watermark on the edge where you determine which panel is to follow the recommended order of installation. We recommend you make a small numbering scheme using the watermarks to follow as opposed to visually looking at the panel designs.

Apply the Adhesive

1. First place the panel on the work table with the non-printed side up, remove the protective film, apply the recommended adhesive (Figure 3) taking into account that the thread should be no less than 1/8 inch thick (Figure 3a), this can be controlled by the diameter of the hole in the cartridge applicator
2. The adhesive should be placed around the perimeter of the panel on all four sides at about 1 inch from the edge. Then apply vertical thread up and down the length of the panel at about 8 inches apart. (Figure 3b).

Install the Panel

1. Place the panel against the wall with the adhesive side toward the wall (Figure 4). The adhesive will allow you to make positioning adjustments for 15-20 minutes (depending on the used brand). This time varies based of the humidity within the room where it is being installed. High humidity reduces the time and low humidity increases the time.
2. Install spacers (Figure 5). We recommend placing 1/8-inch spacers between each panel and between panels and the floor.

Cutting

1. To cut the panels you must use a circular saw and recommended blade (Figure 6). The cutting operation should always be done with the printed side up. Before making the cut, fix the cutting guide to the panel using pressure clamps, we recommend the use of a square to ensure that the cut is straight.
2. Once the cut is made, carefully sand the cut edge with sandpaper to smooth it out.

Applying sealant to joints

1. Once all the panels have been installed, tape each side of the joints before filling with sealant (Figure 7).
2. Wipe off excess sealant with a plastic spatula (Figure 8). Important: clean-up of excess sealant should not be delayed, the drier the sealer is, the more difficult it will be to remove.

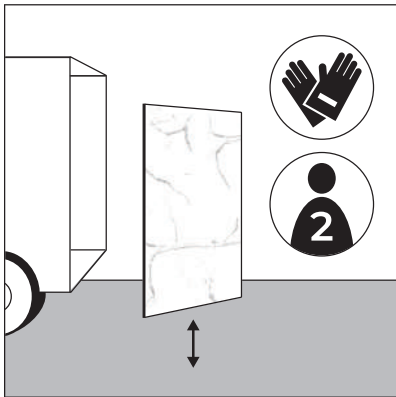


Figure 1



Figure 2

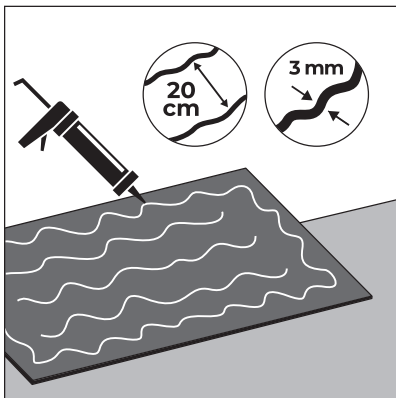


Figure 3

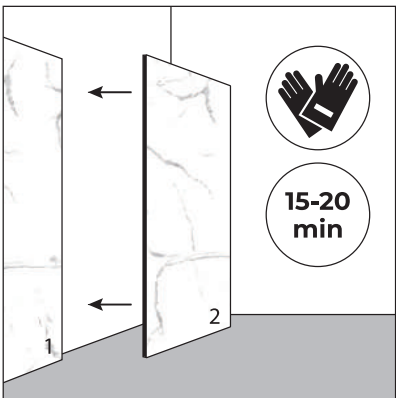


Figure 4



Figure 5

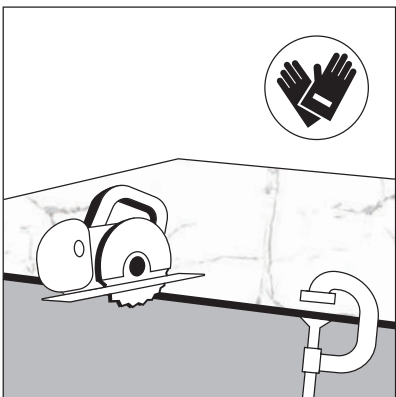


Figure 6

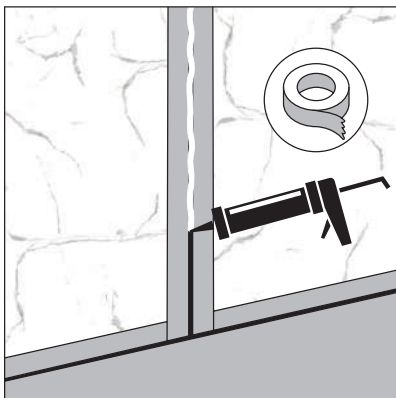


Figure 7

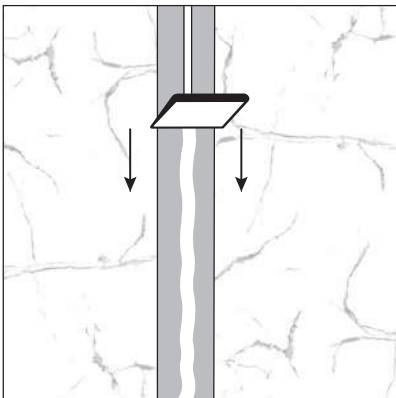


Figure 8